



# The Golden Nugget

The Newsletter of the Florida Gold Coast  
Gem and Mineral Society

March 2017  
Vol 17 Issue 3

Mailing Address: 6254 NW 102 Way, Parkland, FL 33076 Club Email: [Thebranclan@bellsouth.net](mailto:Thebranclan@bellsouth.net)  
Club Website: <http://www.fgcgms.com> Federation Website: <http://www.amfed.org/sfms>

## INSIDE THIS ISSUE

- 1 The Opening Act, Our Rock Star
- 2 Get Involved, Diamonds Are Forever, Regional News
- 3 Local News, Meeting Minutes
- 4 Ads, Contacts, Things to Remember & The Last Word



*The Florida Gold Coast Gem & Mineral Society meets at 7:30 PM ON THE 3<sup>RD</sup> WEDNESDAY OF EACH MONTH at "Ye Olde Rock Shop" 1425 S. 30<sup>th</sup> Ave, Hollywood, FL 33020*

*Take I-95 to Pembroke Road, (Exit 19), go West ½ blk. Turn Right just before the RR tracks. Turn Right after the 1<sup>st</sup> building, then Left at the fence. Ye Olde Rock Shop will be on the left 50 feet up.*

**Visitors & Members are encouraged to attend!**

## The Opening Act

### Monthly Meeting – Show & Tell

Our March meeting is **Wednesday, March 15<sup>th</sup> at 7:30pm**. The club is having a "Show & Tell" by the members. Members are asked to bring in samples of their collection, samples of their work, cut stones, jewelry, fossils or other related items to display and discuss. Items may be offered for sale or trade with other members. Tables will be set up for displays.

**Meeting Refreshments:** This month's meeting refreshments will be sponsored by club members Pat & Ed Rosbury.

### Rock Star of the Month is Geode !!!

The Rock Star of the Month for March is Geode. Please bring any Geode rough, specimens or jewelry you have to show the club.

**What Is This?** As discussed at our last meeting, there have been very few items brought in recently by members for "What is this". This portion of our meeting is meant for you to learn about what you have. If you have bought, found or inherited a rock, gemstone or mineral and don't know what it is or don't know much about it, please bring it in! Ideally there will be 1 or 2 items each month for us to discuss. If you plan to bring something, please email me and let me know. I may ask for you to bring it in the following month to avoid too many items at one time.

**Miami Club has Tables Available** The Miami Mineralogical & Lapidary Guild has 8' vendor tables available at their show in April for \$40 for the weekend. This is great chance to sell your jewelry, cut stones or specimens. The event will be advertised in the Miami Herald. Show details can be found on page 2 under Regional Shows.

## Our Rock Star – A Look Back

Like Don McLean sang; *A long, long time ago, I can still remember*, when we talked about our rock star Barite! That was back in 2014. Wow, how time fly's. Barite is a mineral made up of barium sulfate (BaSO<sub>4</sub>). It got its name from the Greek "barys" meaning heavy because of its heavy weight. Barite has a SG of 4.5, a Mohs hardness of 2.5 - 3.5, streaks white, has a vitreous to pearly luster and has an orthorhombic crystal system. Barite is also spelled Baryte throughout the United Kingdom.

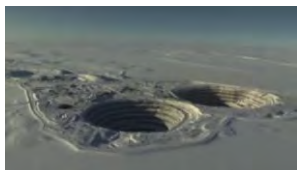
While most people think of Barite as being white, it can have a variety of colors including light blue, yellow or brown, colorless or even banded or multicolored. Barite is commonly fluorescent and sometimes phosphorescent. Barite often forms as void-filling crystals in sedimentary rock such as limestone.

(Cont'd on page 3)

**“Diamonds Are Forever”**

Over 200 tons of ore are mined to produce a 1 carat diamond. Diamond mining is time consuming, incredibly expensive & requires massive equipment & manpower. Alluvial diamond finds are traced back to the Kimberly pipe. Open pit mining begins over the pipe area. Earth is excavated in a “terrace” hole. Blasting & removal of earth continues until “blue earth” or kimberlite is found. The Diavik Mine in the Canadian arctic is 300 meters across & 800 meters deep. 1100 people work 24/7 to mine 7000 tons of ore every day, producing 8 million carats of diamonds every year! Underground or hard-rock mining is used when the diamond material is deep & used when open pit mining becomes too costly. Parallel mine shafts, large enough to easily fit large trucks & heavy machinery are dug to allow for excavation of horizontal shafts across the ore area. Blast openings called “galleries” are used to blast, collapse and collect kimberlite ore. If diamonds are formed deep in the earth, are they ever found in water?

Answer on page 4.



Diavik mine from space: minesqc.com

**GET INVOLVED!**

The Florida Gold Coast Gem & Mineral Society offers a variety of ways that you can become involved within the club.

**What is it?** Got a rock you’ve always wondered about? At each monthly meeting we spend a few minutes identifying rocks, gems or minerals. Sometimes we know...sometimes we have to find out.

**The Cabbing Shop** Learn how to cabochon or facet a gem stone by our experts, for nominal fee. Once you learn, the shop is available for use, for a small charge. Please ask Steve or Don about classes.

**The Library** The Les & Marge DeGarmo Library has a variety of books & magazines on just about any subject dealing with rocks, gems, minerals or jewelry.

**Outside Our Area** Check out the Southeast Federation website. Rock & Gem Clubs from all over the U.S. have websites that you can contact. Lapidary & jewelry schools such as Wild Acres or William Holland list class schedules.

**TIPS AND TRICKS** By Brad Smith are available at facebook.com/benchtips or groups.yahoo.com/group/BenchTips. For details go to <http://Createspace.com/3976439> or <http://amazon.com/dp/0988285800>

**Mineral Study Group:** KC Foster has a monthly group meeting the first Thursday of each month from 7:30 to 10:00pm. Contact KC at 561-523-4600. You will learn about crystal systems, how to ID minerals, what reference materials are available and how to collect, mount and display micro-minerals.

**Regional Gem & Mineral Shows****March 17-19—SARASOTA, FLORIDA**

Show and sale; Frank Cox Productions, Sarasota Municipal Auditorium; 801 N. Tamiami Trail, Sarasota, 34236 Daily 10-5; Admission \$5, Under 16 Free; Gems, Jewelry, Crystals, Minerals, Fossils and Beads.

**April 8 - 9 Pinecrest, FL (South Miami)**

The Miami Mineralogical & Lapidary Guild Semi-Annual Gem, Jewelry, Mineral & Fossil Show; Evelyn Greer Park, 8200 SW 124<sup>th</sup> St, Pinecrest 33156; 1 blk off US1. Sat & Sun 10 - 5, Admission \$6, children under 12 free w/adult. Exhibits, demonstrations, vendors, raffles & children’s activities. Map & discount coupon available at [www.miamigemandmineral.com](http://www.miamigemandmineral.com).

**William Holland & Wild Acres Lapidary Classes**

The class schedules for William Holland & Wild Acres lapidary Schools are taking shape and will be offered from mid-June through late August. William Holland is located in Young Harris, GA (NE border with NC) with classes from June 11-17. ([www.lapidaryschool.org](http://www.lapidaryschool.org)) Wild Acres is located in Spruce Pine, NC (NW NC) and classes will run during the Franklin & Grass Creek Gem Shows, June 23-29 & Aug 21-27. ([www.wildacres.org](http://www.wildacres.org)) A list of classes currently available for both locations can be found at [www.sfmssworkshops.com](http://www.sfmssworkshops.com). Classes fill quickly, don’t wait to register!

## Local News

**February 15th Meeting Minutes:** The meeting was called to order at 7:35 PM. The minutes of the January meeting were accepted. There were 32 members and 2 guests in attendance. Thank you Colleen Lacy for bringing the refreshments! Shop Report: All equipment is working well. Sean has been using the new saw and cutting some beautiful slabs. Don Dietz was contacted by someone who donated a tilt-grinder to the club. Sean reminded the membership that he needs help in scheduling monthly programs. If you have a suggestion for a monthly program, please let Sean know as soon as possible. Darlene Harris reviewed the spring trip to Venice, Florida to hunt for fossil shark's teeth. The cut-off date for this trip is March 29<sup>th</sup>. Buzz reminded the members that "What is this" is meant for them to bring known or unknown items for identification & discussion. Please email Buzz if you are bringing something for discussion. The date of the next tri-county picnic is June 4<sup>th</sup>. Dues are due; if you have not renewed your membership yet, please contact Audrey as soon as possible. Hillary and Lillian are both feeling better. The PBS movie "Treasures of the Earth: Gems" was shown as our feature presentation. This interesting movie explained how gems are formed deep in the earth. The meeting was adjourned at 9:30PM.



## Our Rock Star (from page 1)

Barite can also be found in sand concretions where it can take on flower type shapes called "desert roses". Barite is used in the production of heavy paper, such as playing cards, as well as filler for paper, cloth & rubber. Barite is the primary source for barium. Barite can block x-ray & gamma ray emissions when mixed into concrete. This is widely used in industrial construction where radiation will be used. Barium is also used in the medical industry for diagnostic tests such as barium swallows or enemas. (Yuk!) But the primary use (over 90%) of barite is for the oil & gas drilling industry. Barite's heavy weight makes it ideal as a drilling mud, which cools the drill bit and suspends the cuttings. Barite is found throughout the world, with major deposits in China, Morocco, India & the U.S. . In the U.S., Barite is found in Illinois, Nevada, Colorado & Oklahoma. While it's not a gemstone, Barite is incredibly important and that's what makes it a true rock star!



Information for this article gathered from Smithsonian Rock & Gem, Google Image, [www.minerals.net](http://www.minerals.net), [www.geology.com](http://www.geology.com), [www.rocksforkids.com](http://www.rocksforkids.com), [www.mindat.org](http://www.mindat.org), & Wikipedia



JACQUELINE YODER

(954) 585-8988  
Fax (954) 585-8989

E-mail: jackiescrystalcave@att.net

Hours: 12 Noon to 6 p.m. Tues., Wed., Thur., Fri.  
10:30 a.m. to 3 p.m. Sat., Closed Sun. & Mon.Stirling Place  
6835 Stirling Road  
Davie, Florida 33314**Design By Nature**

**Ye Olde Rock Shoppe**  
1425 S. 30th Avenue Hollywood, FL 33020  
yeolderockshoppe@comcast.net

**The showroom is open Tuesday -  
Saturday 9:00- 2:00 and other times by  
calling 954-295-0606.**

**The Art School**

The Art School offers classes in precious metal clay, metals fabrication, cabochon cutting, enameling and other art jewelry related subjects, as well as drawing, painting, clay and pottery, photography and more. Check it out at [www.bocamuseum.org/theartschool](http://www.bocamuseum.org/theartschool) or [facebook.com/bocaschool](https://www.facebook.com/bocaschool) or call at 561-392-2503.

**The Last Word**

At our last meeting, our "Rock Star" was Tanzanite, a gemstone that can appear different colors depending upon the light. This phonimon is called "Pleochroism". There's a great article with a complete scientific explanation of what is occurring on geology.com. On the webpage, scroll down the right column to find the article titled "Pleochroism in faceted Gems: An Introduction". If you buy or sell gems, this is a "must read" !

If you didn't show up at the meeting, we missed you. Please come to the Show & Tell!



Quality lapidary Equipment & Supplies  
Since 1946 954-327-9103  
[www.gravescompany.com](http://www.gravescompany.com)

**THINGS TO REMEMBER**

The April 2017 meeting is **Wednesday, April 19<sup>th</sup>** at 7:30 pm. Please make plans to attend.

***Diamonds Are Forever:*** Large scale *alluvial* mining at beaches or riverbeds involves damming, draining & excavating. Marine alluvial mining involves vacuuming ore from the seafloor, usually producing larger, gem quality diamonds.

**Shop Hours:** Thursdays 6:30 - 9:30 PM, Sundays 9:00AM-12:00PM - Contact Steve to RSVP 954-989-1664. The shop is located at **33 East Acre Drive, Plantation, 33317, Ste. 33.**

**FGCGMS OFFICERS CONTACT INFORMATION**

President	Sean Branigan	954-592-1503	<a href="mailto:the_branclan@bellsouth.net">the_branclan@bellsouth.net</a>
Vice-President	Karen Warseck		<a href="mailto:kwarseck@gmail.com">kwarseck@gmail.com</a>
2nd Vice-President	Steve Ackerman	954-989-1664	<a href="mailto:tropicbuilding@pghmail.com">tropicbuilding@pghmail.com</a>
Secretary	Susan Anderson		<a href="mailto:poochiepawlor@aol.com">poochiepawlor@aol.com</a>
Treasurer	Beverly Norona		<a href="mailto:bevn12345@aol.com">bevn12345@aol.com</a>
Editor	Buzz Robinson		<a href="mailto:buzzrocks@comcast.net">buzzrocks@comcast.net</a>
Webmaster	Eugene Hirnyk		<a href="mailto:webmaster@fgcgms.com">webmaster@fgcgms.com</a>
Membership	Audrey Sessoms		<a href="mailto:theaudrey@comcast.net">theaudrey@comcast.net</a>
Sunshine Chair	Debbie Malloy		<a href="mailto:yorkierambo@bellsouth.net">yorkierambo@bellsouth.net</a>
Shop Foreman	Steve Ackerman	954-989-1664	<a href="mailto:tropicbuilding@pghmail.com">tropicbuilding@pghmail.com</a>